

SRSF9 / SFRS9 Antibody
Rabbit Polyclonal Antibody
Catalog # ALS16177**Specification**

SRSF9 / SFRS9 Antibody - Product Information

Application	WB, IHC-P, E
Primary Accession	Q13242
Reactivity	Human
Host	Rabbit
Clonality	Polyclonal
Calculated MW	26kDa KDa
Dilution	WB~~1:1000 IHC-P~~N/A E~~N/A

SRSF9 / SFRS9 Antibody - Additional Information**Gene ID** 8683**Other Names**

Serine/arginine-rich splicing factor 9, Pre-mRNA-splicing factor SRp30C, Splicing factor, arginine/serine-rich 9, SRSF9, SFRS9, SRP30C

Target/Specificity

Human SRSF9 / SFRS9

Reconstitution & Storage

Aliquot and store at -20°C or -80°C. Avoid freeze-thaw cycles.

Precautions

SRSF9 / SFRS9 Antibody is for research use only and not for use in diagnostic or therapeutic procedures.

SRSF9 / SFRS9 Antibody - Protein Information**Name** SRSF9**Synonyms** SFRS9, SRP30C**Function**

Plays a role in constitutive splicing and can modulate the selection of alternative splice sites. Represses the splicing of MAPT/Tau exon 10.

Cellular Location

Nucleus. Note=Cellular stresses such as heat shock may induce localization to discrete nuclear bodies termed SAM68 nuclear bodies (SNBs), HAP bodies, or stress bodies. Numerous splicing factors including SRSF1/SFRS1/SF2, SRSF7/SFRS7, SAFB and KHDRBS1/SAM68 accumulate at these

structures, which may participate in the post- transcriptional regulation of mRNAs in stressed cells

Tissue Location

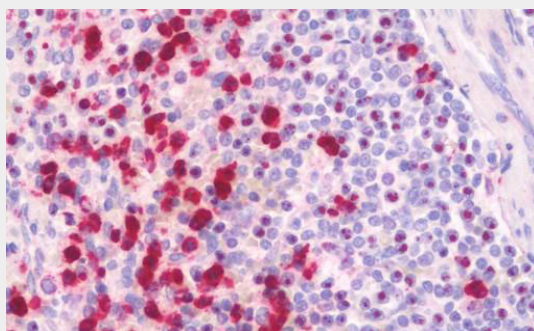
Expressed at high levels in the heart, kidney, pancreas and placenta, and at lower levels in the brain, liver, lung and skeletal muscle.

SRSF9 / SFRS9 Antibody - Protocols

Provided below are standard protocols that you may find useful for product applications.

- [Western Blot](#)
- [Blocking Peptides](#)
- [Dot Blot](#)
- [Immunohistochemistry](#)
- [Immunofluorescence](#)
- [Immunoprecipitation](#)
- [Flow Cytometry](#)
- [Cell Culture](#)

SRSF9 / SFRS9 Antibody - Images



Anti-SRSF9 / SFRS9 antibody IHC staining of human spleen.

SRSF9 / SFRS9 Antibody - Background

Plays a role in constitutive splicing and can modulate the selection of alternative splice sites.
Represses the splicing of MAPT/Tau exon 10.

SRSF9 / SFRS9 Antibody - References

Screaton G.R.,et al.EMBO J. 14:4336-4349(1995).
Yamagata K.,et al.Submitted (JAN-1997) to the EMBL/GenBank/DDBJ databases.
Scherer S.E.,et al.Nature 440:346-351(2006).
Yuan Y.,et al.J. Biol. Chem. 273:20347-20353(1998).
Nayler O.,et al.Nucleic Acids Res. 26:3542-3549(1998).